

# Pipeline Flow Indicator

## Sight Glass



### Model 500

## Product Description

Model Number 500 sight glass is ideal for you to visually check the presence, color and condition of a liquid. Model Number 500 provides a quick, reliable, and economical way to verify flow and monitor color and clarity in fluid lines. Several sizes, styles and materials are available for a wide range of industrial applications.

## Manufacturing Materials

Body Material	Gasket	Flange	Glass
Carbon Steel	P.T.F.E		Flexi Glass
304 S.S.			
316 S.S.			
Aluminum			



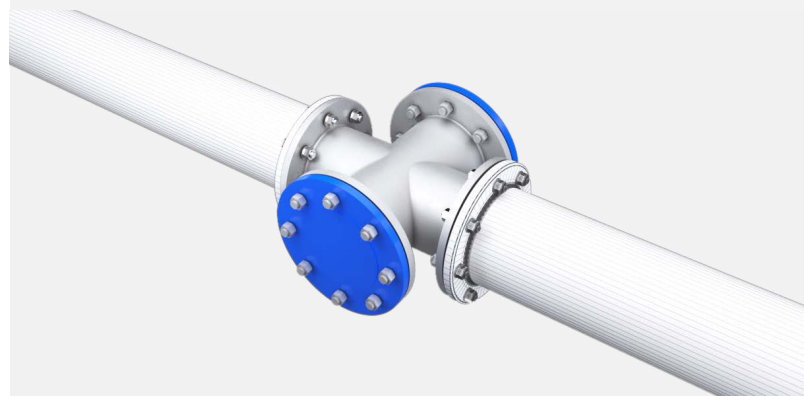
## Key Features

- **Pressures up to 20 bar.**
- **Temperatures up to 200°C.**
- **High quality special design for extreme conditions.**
- **Flanged end connection.**
- **Enhanced Visibility:** Features a durable sight glass for real-time observation of fluid flow, color, and condition without interrupting the process.
- **Robust Construction:** Crafted from high-quality materials, ensuring resistance to high pressure, temperature, and corrosive substances.
- **Versatile Compatibility:** Suitable for various fluids, including water, oil, chemicals, and gases, providing flexibility across multiple applications.
- **Leak-proof Design:** Equipped with a secure sealing mechanism to prevent leaks and ensure the integrity of the pipeline system.
- **Easy Installation:** Designed for straightforward integration into existing pipelines with standard flange, threaded, or custom connections.
- **Maintenance-friendly:** Simple to disassemble for cleaning and maintenance, minimizing downtime and extending the lifespan of the equipment.

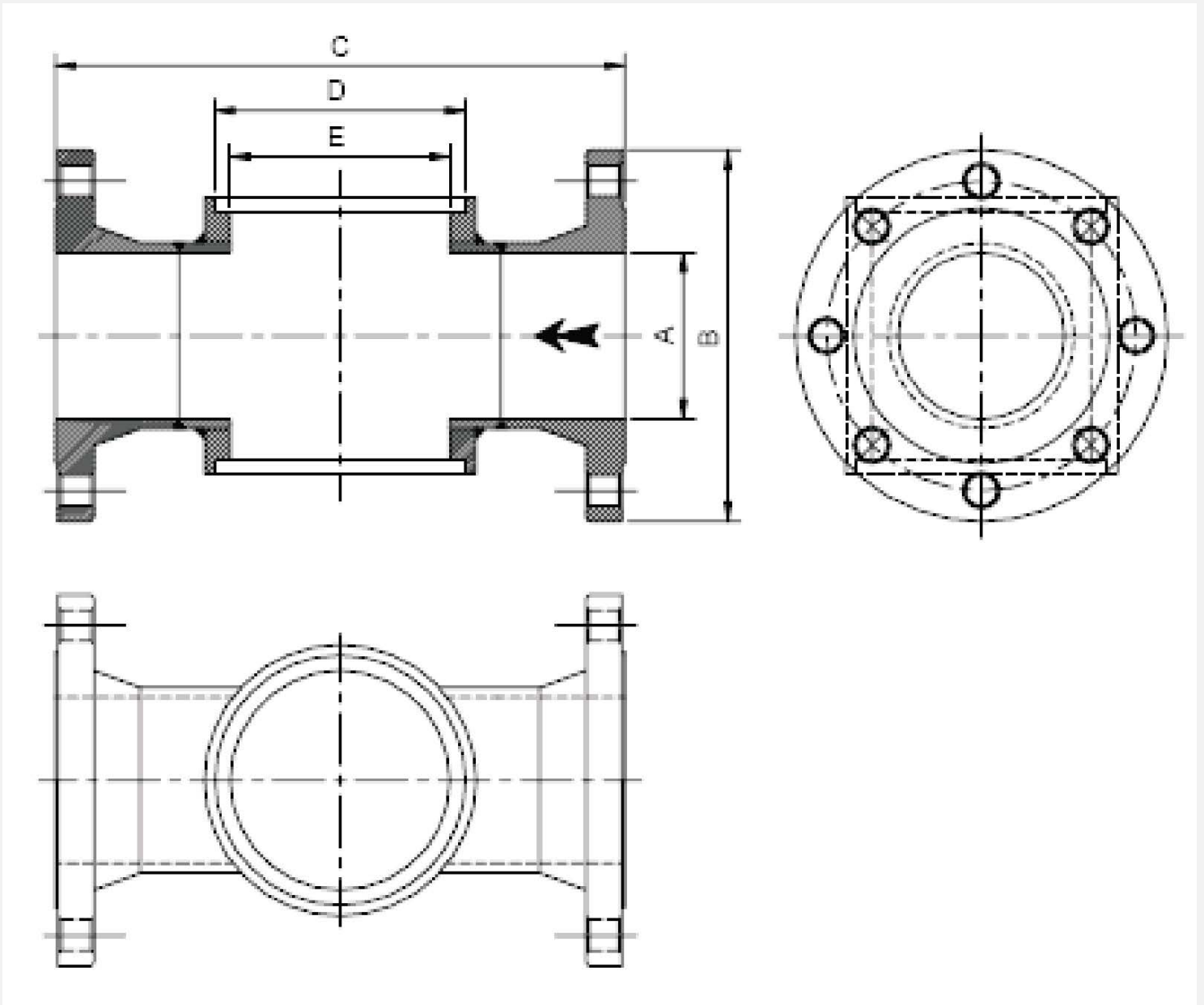
## Applications

The Storagetech Pipeline Flow Indicator with Sight Glass is a vital component for any system requiring transparent monitoring of fluid flow. It serves an array of sectors, effectively enhancing safety, efficiency, and process control in:

- **Petrochemical and refining**
- **Pharmaceutical manufacturing**
- **Food and beverage production**
- **Water and wastewater management**
- **Any industry where pipeline flow monitoring is crucial**



## Technical Drawing



## Weight & Dimensions

Model	A Nominal Conn. Inch (mm)	B Outside Diameter Inch (mm)	C Overall Length Inch (mm)	D Diameter Inch (mm)	E Diameter 1/4 Inch (mm)
500	4 (100)	8-1/2 (220)	14 (350)	6(150)	5-1/3 (135)
500	6 (150)	11-1/5 (285)	18 (450)	8-1/4 (210)	6 (150)
500	8 (200)	13-1/3 (340)	23-1/2 (600)	11 (275)	10-1/4 (260)
500	10 (254)	16 (406.4)	27 (695)	11-3/4 (298)	10-1/2 (268)
500	12 (304.8)	26-1/3 (670.5)	29-1/2 (750)	11-7/8 (300)	10-1/3 (265)
500	14 (336.5)	21 (533.4)	33-1/2 (850)	11-7/8 (300)	10-1/4 (260.4)



## Äger GmbH

### Germany Head Office + R&D + Sales

Herzogspitalstraße 24  
Munich 80331  
Germany  
+49 89 9040 5200  
www.aager.de  
sales@aager.de

### Turkey Head Office + Sales

Ağaoğlu My Office 212  
No: 3 B Blok /175  
P.K 34218 Güneşli – Bağcılar  
Istanbul / Turkey  
+90 212 485 40 07  
+90 212 485 40 42  
www.ergil.com  
sales@ergil.com

### Turkey Factory + Engineering + R&D + Sales

Mersin Tarsus OSB.13.CD.NO:7  
P.K: 33540 Mersin, Turkey  
+90 324 676 44 04  
+90 324 676 44 03  
sales@ergil.com

### U.A.E. Sales + Warehouse

Jumeirah Lake Towers, X2 Tower 1906  
P.O. Box: 123661 Dubai, U.A.E.  
+971 4 450 8051  
+971 4 450 8041  
sales@ergil.com



### data sheet series

Pipeline Flow Indicator  
Sight Glass

Revision No: 01  
ST-DS-PF.SG-02.24/V1  
storagetech.de

Storagetech™ Website  
QR Code



Feb 2024



Äger